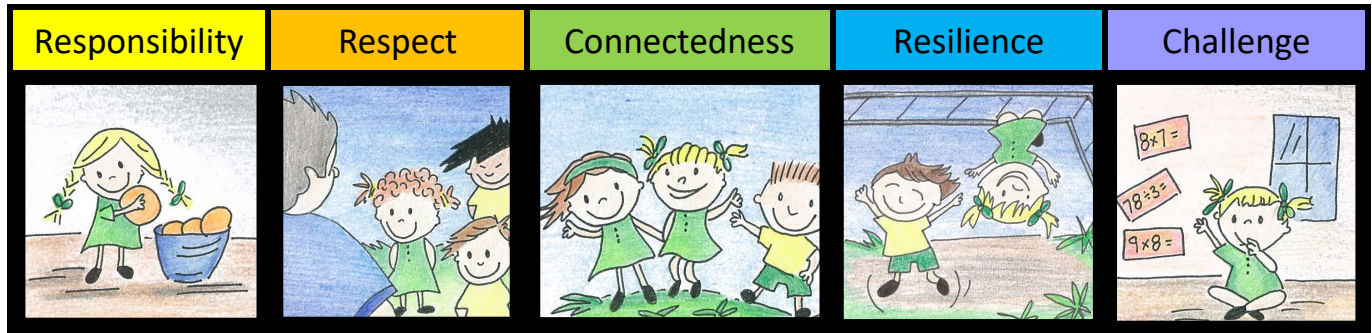


Classroom Follow Through Plan

All incidents that require a referral to Principal/AP/Teacher or the Reset room must be entered on **Sentral**.
CRTs are to report incidents directly to AP or a classroom teacher to enter on **Sentral**.



At Mt Eliza Primary School we choose to **think and act safely**,
make wise choices, **listen and speak respectfully** and
be **brave enough to learn**.

We understand that if we choose to disrespect these expectations there will be follow through for our actions.

Classroom follow through

1. Warning for not following expectations.
2. Initials on board (can be removed by following expectations)
3. A dot is placed after their name. Move to another spot in the classroom.
4. A second dot and removal to another classroom to calm down and reflect.
5. Refer to SWT teacher. Phone call home.
6. Reset room for 30 mins.
7. Refer to Principal or Assistant Principal.
8. Develop a Behaviour Improvement Plan with teacher, parents/carers and student.

